

360° Wave Of Clarity



The First 360° Steerable Line Array

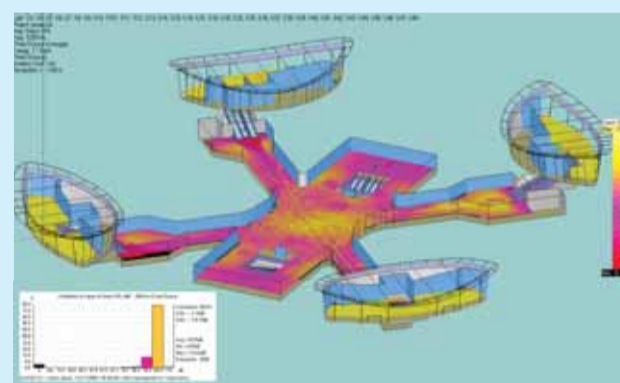
ORBIT®

DSP Triple Side Lobe Free Line Array

ATEiS introduces a new generation range of steerable line-arrays, the **ORBIT®**, that have an **Omni-directional and steerable radiation pattern**, fully redesigned to meet the highest architectural demands and equipped to handle current and upcoming requirements for the Voice - Alarm industry, Commercial Audio and Pro-Sound.

Each ORBIT® Omni-directional array has a very tightly controlled beam, which can be shaped as required for specific applications or environments requiring symmetrical or asymmetrical, single, dual or triple lobe designs where the ORBIT® can be placed free-hanging from the middle of the venue.

The availability of high power audio DSP's makes it possible to provide powerful processing that lead to precise sound beam control and even signal pattern that stays within 3 dB± over a distance of 100 m radius in a 360 degrees wave!



(Khalid Bin Al-Waleed) Station Acoustic Model Dubai Metro, UAE



ATEiS
Power of Innovation

ATEiS Middle East FZCO. ■ P.O. Box: 293640 Dubai United Arab Emirates
Tel: +971 4 6091325 ■ Fax: +971 4 6091326 ■ Email: info@ateis.ae ■ <http://www.ateis.ae>
Ref. PAMEADS / 10 / 106 / 01